

# זרוע יניקה- דגם ARMOTECK

הטכנולוגיה הטובה ביותר ללכידה יעילה של מזהמים



פתרונות הולכה וסינון אוויר



# זרוע יניקה- דגם ARMOTECH



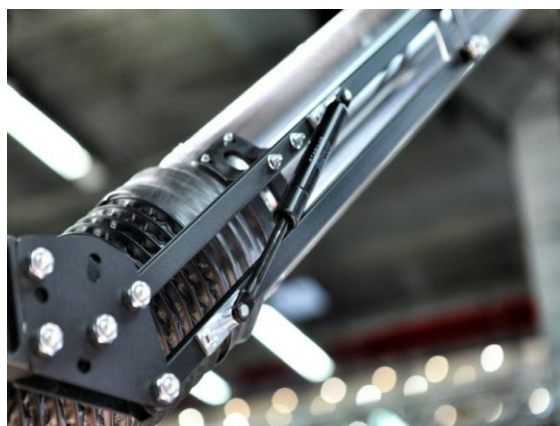
זרוע יניקה דגם ARMOTECH מאפשרת למפעיל יכולת תמרון גבוהה יחד עם יציבות וקיבוע מיקום משופר .

לזרוע זאת יציבות מיקום יוצאת דופן המובטחת על ידי מבנה הפנטוגרף ( Pantograph ) שמייצרות בוכנות הזרוע. ניתן לסובב את הזרוע  $360^{\circ}$  . הזרוע גמישה ומתאזנת מעצמה בנקודת העבודה.

מערכת התמיכה מיוצרת מפלדה מחוזקת וסגסוגת אלומיניום 6061 במצב T6 על מנת להבטיח עמידות למרות חשיפה ממושכת לאדי ריתוך.

ראש היניקה מצויד במגופה וידית הזזה כסטנדרט

מערכת המפרקים חיצונית לזרימת האוויר תצורה זו מאפשר קבלת ספיקת אוויר גבוהה יותר ברמת רעש נמוכה יותר והגנה על מערכת המפרקים מפני מזהמים שעלולים לפגוע בתנועת הזרוע



# זרוע יניקה- דגם ARMOTECH



פתרונות הולכה וסינון אוויר



Technical data sheet

ARTICULATED EXTRACTION ARMS

**ARMOTECH**

Articulated extraction arm for the removal of welding fumes and micro-particulate, self-supporting pantograph structure balanced with double sealed gas pistons, aluminium hose



APPLICATIONS



MIG MAG



MIG MAG  
PULSATO



MMA SALDATRICI  
AD ELETTRODO

Extraction of fumes and micro-particulate from welding.  
Wall or trolley installation are possible.  
Not for use with particulates or liquids.

FEATURES

The new Armotech series, thanks to the materials used and its innovative design, provides the operator with high manoeuvrability, a stable position and exceptional durability, guaranteed by a self-supporting pantograph structure balanced with double-sealed pistons which support the arm.

The external load bearing structure is manufactured from re-enforced steel and 6061 aluminium components CNC machined from single blocks to achieve T6 properties, then anodised to guarantee durability over time, despite continuous exposure to fumes.

The rigid hose is made of aluminium to maintain lightness.

The extraction hood, with high uptake for maximum efficiency of extraction, includes a manual damper to regulate airflow, anti-intrusion grille protection and handle.

The wall-mounted versions are equipped with a painted steel shelf for fastening and connection to the fume expulsion hose.

The Armotech series is available in three versions:

IBSA: wall-mounted version, supplied with a painted steel bracket for fastening and connecting to the exhaust fumes hose.

IBSAV: Version complete with centrifugal fan, for wall installation, supplied with a painted steel bracket for fastening and connecting to the exhaust fumes hose.

IBSAC: version for use on a trolley or horizontal surface (for e.g. down-draught benches).

CERTIFICATIONS



## TECHNICAL DATA

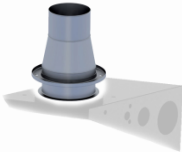
IBSA	DIAMETER	LENGTH	FLOW RATE	HEAD LOSS	TOTAL WEIGHT
	mm	mm	m <sup>3</sup> /h	Pa	Kg
160/2	160	2000	from 1000 to 1200	media 700	18
160/3	160	3000	from 1000 to 1200	media 700	26
160/4	160	4000	from 1000 to 1200	media 700	30

IBSAV	DIAMETER	LENGTH	EXTRACTION FAN	POWER	EXTRACTION CAPACITY	RESIDUAL PRESSURE	NOISE	TOTAL WEIGHT
	mm	mm	mod.	KW	m <sup>3</sup> /h	Pa	dBA	Kg
160/2	160	2000	EV 18	1,5	1200	250	74	34
160/3	160	3000	EV 18	1,5	1200	250	74	42
160/4	160	4000	EV 18	1,5	1200	250	74	46

IBSAC	EXTRACTION FAN DIAMETER	LENGTH	FLOW RATE	HEAD LOSS	TOTAL WEIGHT
	mm	mm	m <sup>3</sup> /h	Pa	Kg
160/2	160	2000	from 1000 to 1200	media 700	13
160/3	160	3000	from 1000 to 1200	media 700	21
160/4	160	4000	from 1000 to 1200	media 700	25

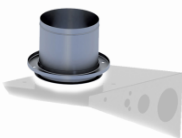
## ACCESSORIES

### SLEEVE FOR HOSE CONNECTION Ø125 mm.



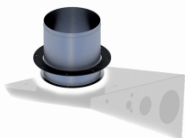
Fitting for IBF articulated arm for the connection of wall-mounted shelves with flexible hose on centralised systems or installation for remote extraction fan connection.  
Galvanised steel rimmed sleeve for flexible hose connection Ø125 mm.  
The performance data was measured using the appropriate instruments in our laboratories.

### SLEEVE FOR HOSE CONNECTION Ø160 mm.



Fitting for IBF articulated arm for the connection of wall-mounted shelves with flexible hose on centralised systems or installation for remote extraction fan connection.  
Galvanised steel rimmed sleeve for flexible hose connection Ø160 mm.  
The performance data was measured using the appropriate instruments in our laboratories.

### SLEEVE FOR HOSE CONNECTION Ø200 mm.



Fitting for IBF articulated arm for the connection of wall-mounted shelves with flexible hose on centralised systems or installation for remote extraction fan connection.  
Galvanised steel rimmed sleeve for flexible hose connection Ø200 mm.  
The performance data was measured using the appropriate instruments in our laboratories.

## “EV” SERIES ELECTRIC CENTRIFUGAL EXTRACTION FAN



“EV” electric centrifugal extraction fans are preconfigured for fixing to the wall-mounted shelf of articulated arms.

Manufactured from galvanised steel with forward blades, unel-mec ip55 electric motor.

Supplied with preassembled insert for fixing to the extraction arm shelf.

Special voltage upon request.

Special configurations (ATEX, STST) upon request.

MOD.	MAX. FLOW RATE	MAX. PRESSURE	INSTALLED POWER	ARRANGED FOR
	m <sup>3</sup> /h	Pa	Kw	MOD.
EV 15	1800	1500	1,1	ARMOFLEX
EV 18	2300	1580	1,5	ARMOTECH
EV 30	3000	1200	2,2	CLASSIC

## PAB



Extender for articulated extraction arms.

## ELECTRICAL PROTECTION PANELS FOR EXTRACTION FANS



Electrical panel for start-up and circuit-breaker protection for extraction fans EV 15 / EV 18 / EV 30.

## FLOOR STANDING SUPPORT



Universal column pre-drilled for wall-mounted shelf 700x700 mm.

Anti-reflection coating grey RAL 7032.

