

# HCY-W1 MIST COLLECTOR

new edition

Compact design and easy installation.

Apply for different kinds industries. Adopt multiple filter technologies. The filtration efficiency is up to 98.5%.



high  
efficiency

Filtration efficiency up to  
98.5%

**BODHI Eelectronic Equipment Co., Ltd.**

**BODHI COLLECTOR**

[www.bodhicollector.com](http://www.bodhicollector.com)

# Proven Technology and optimum performance

## Plug-type pre-filter(Plug-and-play)

Adopt multiple metal material and stable structure, the absorption effect is good. It can be washable, filtering down most large particles.

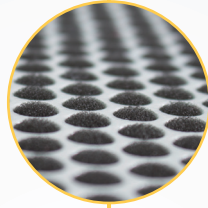
*Perpetual*



## Outlet filter cotton

Large filtering area, high absorption efficiency, which can effectively filter down most small oil mist particles.

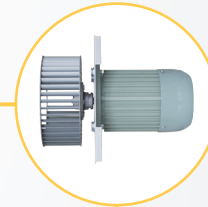
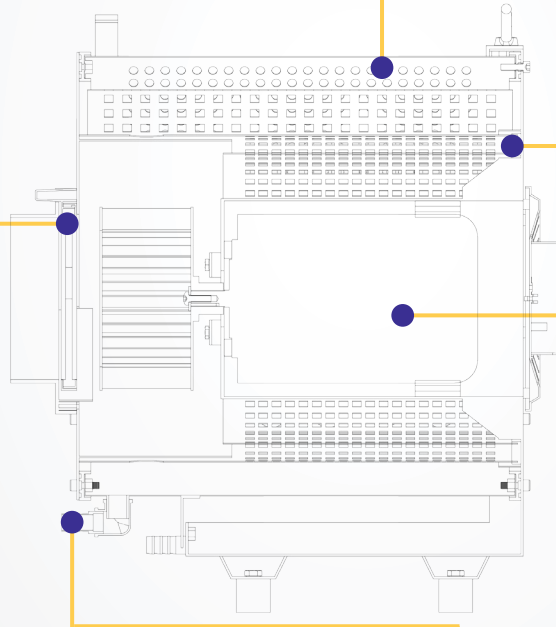
*Filter efficiency can be up to 95%*



## Core filter cartridge

Adopt F9 grade filtering material, which is scientifically proven to achieve cleaner air, lower pressure, longer filter life and easy maintenance.

*Filter efficiency can be up to 98.5%*



## Energy Saving Fans

Backward-inclined, energy-efficient centrifugal fans of heavy duty design, class II energy consumption, direct drive motor.

*Energy conversion rate of 78%.*

## • Working Principle

At first, the inhaled oil mist into the Plug-type filter, liquid oil mist particles will be filter down by filter screen. Attached surface of filter screen and gathered into drops, dripping into the oil trap, formed first filtration. The rest of the aerosol particles formed airflow under the impetus of the impeller, gathered liquid phase, intercept by the core filter cartridge, gather drop into the oil trap again, formed twice gas filtration. Finally, the processed gas will impact with outlet filter cotton, the air can be used for the interior circulation after purification.



## Oil Drainage Pipe

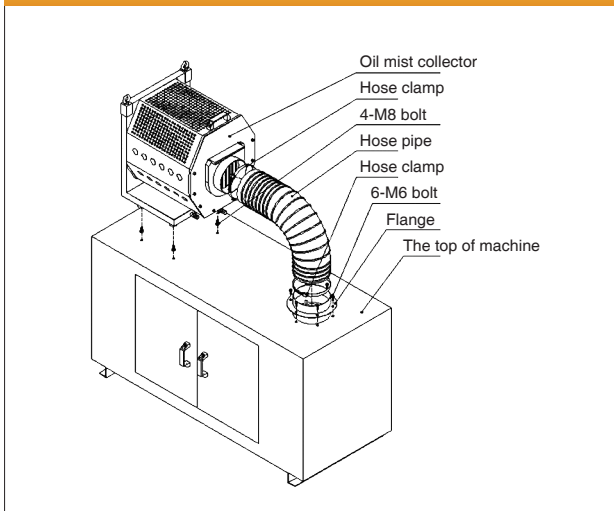
Designed to foster the drainage of collected oil. Apprived better drainage efficient.



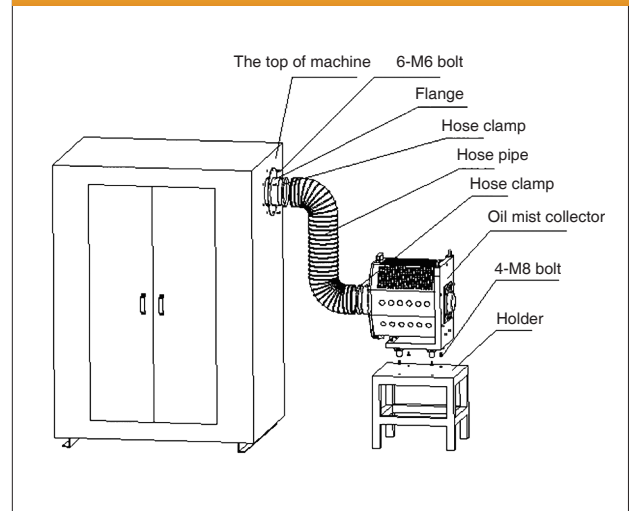


## Installation Diagram

### Top Mounted



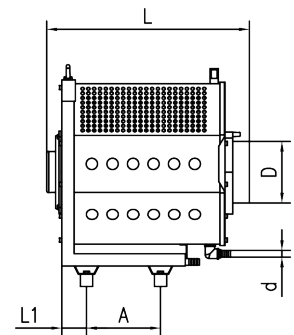
### Side Mounted



## Product Specifications

220V/380V 50Hz 3P

Model	Airflow	Pressure	Power	Current	Filter area	Weight	Filter life
	M <sup>3</sup> /h	Pa	W	A	M <sup>2</sup>	Kg	Month
HCY-80W1	800	720	550	1.38	2	30	8-12
HCY-100W1	1000	970	550	1.38	3	30	8-12
HCY-120W1	1200	1110	750	1.82	4	38	8-12
HCY-140W1	1400	1360	750	1.82	5	38	8-12
HCY-160W1	1600	1460	1100	2.60	6	45	8-12
HCY-180W1	1800	1650	1100	2.60	7	45	8-12
HCY-200W1	2000	1850	1500	3.44	8	50	8-12



mm

Model	L	W	H	L1	H1	A	B	φD	φd
HCY-80W1	400	320	380	50	260	180	250	100	20
HCY-100W1	430	380	465	62	280	180	250	150	20
HCY-120W1	430	380	465	62	280	180	250	150	20
HCY-140W1	460	430	510	62	302	200	300	150	20
HCY-160W1	460	430	510	62	302	200	300	150	20
HCY-180W1	480	500	600	70	330	200	380	200	20
HCY-200W1	480	500	600	70	330	200	380	200	20

