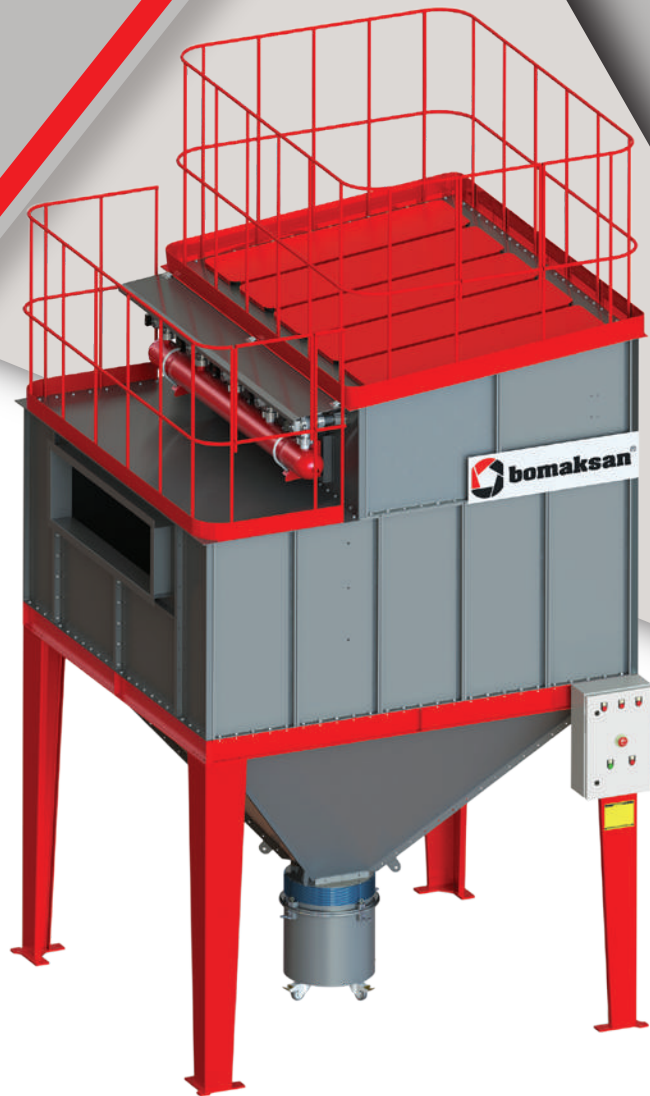




bomaksan[®]
INDUSTRIAL AIR FILTRATION SYSTEMS



PKF
MODULAR JET-PULSE
CARTRIDGE DUST COLLECTOR

GENERAL FEATURES



MODULAR

Bomaksan branded PKF Jet-Pulse Dust Collector has a modular structural design. Thus when you need to increase your filter capacity, you can directly add a new PKF device to your system without replacing the old one.



FLEXIBILITY

Bomaksan branded PKF Jet-Pulse Dust Collector may be re-designed by Bomaksan engineers by considering your factories settlement plan and provides the most suitable solution.



DURABLE & LEAK PROOF

Side and upper doors of cabin, makeup profile, chassis and carrying legs are produced with sufficient plate thickness and leak-proof is ensured by press inflection unifying with a nut.



AUTO CLEANING SYSTEM

Thanks to it's high efficient automatic cleaning system designed by Bomaksan engineers as part of an R&D project, while the consumption of compressed air is decreasing, the life and performance of filters increases.



EASY INSTALLATION

Thanks to it's special design, Bomaksan branded PFK Jet-Pulse Dust Collector is shipped to your factory as ready to be setup and easily put to use.



EASY MAINTENANCE

Bomaksan branded PKF Jet-Pulse Dust Collector gives you the chance to change dust bin discharge and filter easily due to its ergonomic design.

APPLICATIONS



Metal Working



Foundry



Sand Blasting



Powder Coating

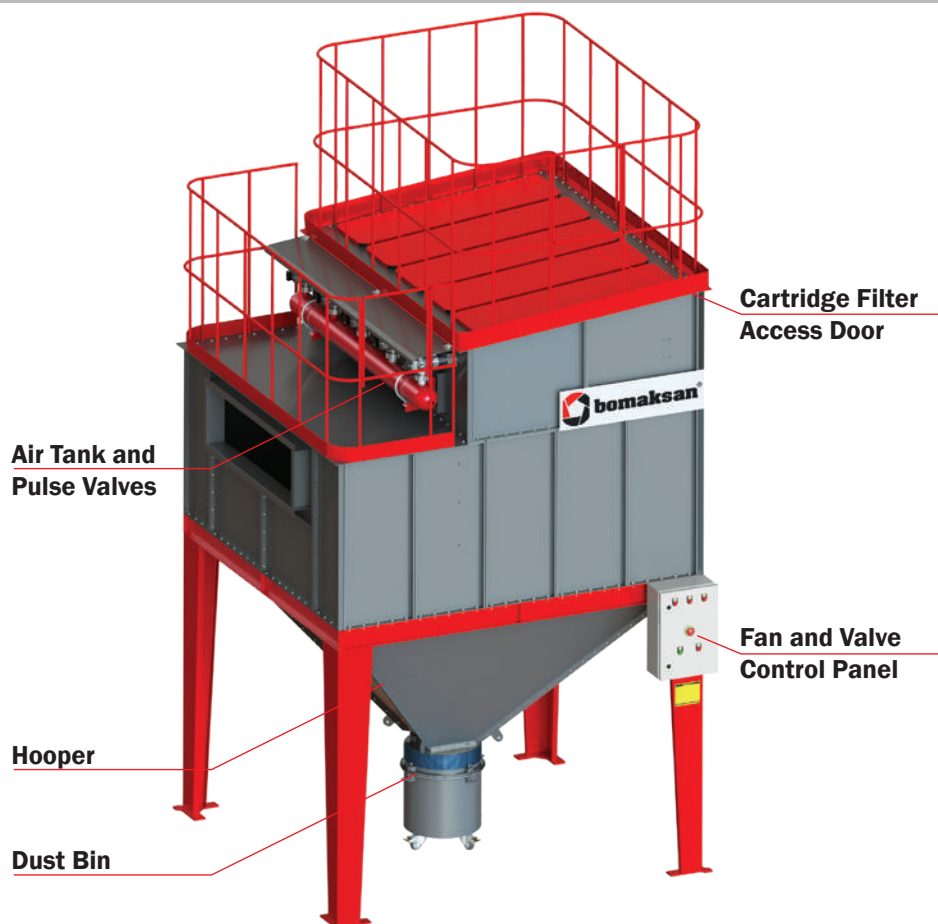


Food

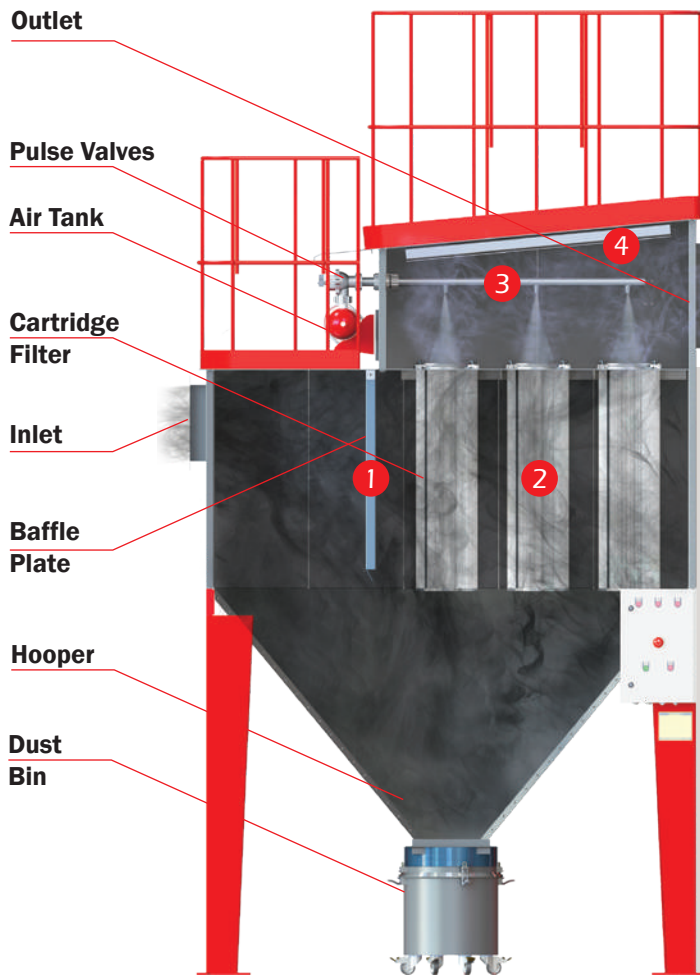


Chemicals

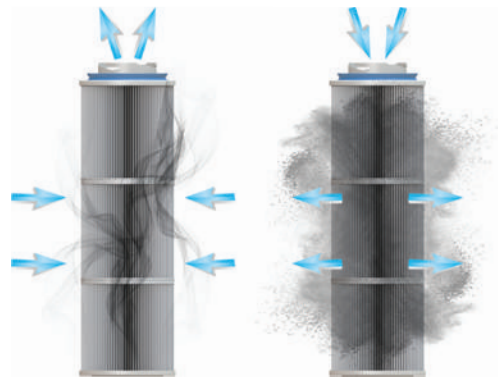
OVERVIEW



HOW IT WORKS?



FILTER CLEANING



- 1 Heavy particles carried by dirty air (such as spark, big and abrasive particles and so on) are directed to bunker via flapper.
- 2 Light particles in dirty air rise in filter cabin and are hold by cartridge filters.
- 3 Cartridge filters are cleaned by pulse valves with compressed air, after differential pressure sensitive pulse valve controller detects the pollution level of filters.
- 4 Clean air coming from cartridge filters is released to indoor or atmosphere.

SAMPLE SYSTEM LAYOUT

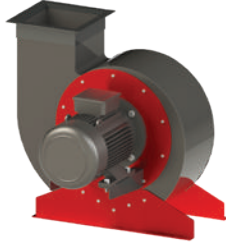


ACCESSORIES

STANDARD ACCESSORIES

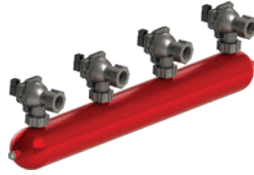
● FAN

Targeted to satisfy requested flow and pressure, centrifuge type, conforming the standards and with its' direct drive motor its' produced to work quite and vibration free. Fan motor are made by steel as standard and balanced dynamically and statically on specialized plants.



● PULSE VALVE & AIR TANK

Pulse Valves are made by aluminum cast and 1½" sized. They perform with 24V DC standard voltage. Air tank is produced conforming to compressed container technique and adequate to store the air between two valves.



● DUST BIN

It helps to empty the collected dust from filter. It has a sealing gasket and can be disassembled and assembled easily. There are two different models with respect to volume.



● CARTRIDGE FILTER

Highly productive 100% non-woven polyester cartridge filters are used. You can find detailed information on cartridge filter section. Highly productive 100% non-woven polyester cartridge filters are used.



● SEQUENCER (dP Control)

It analyzes differential pressure occurs due to pollution of filters digitally and controls pulse valves. Covered with IP 65 class, made by ABS, water- and dust-proof case.



● FAN CONTROL PANEL

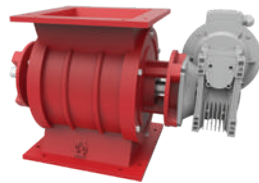
The panel containing thermal switch controlling ventilator engine, contactor, engine protection relay and working/warning lights.



OPTIONAL ACCESSORIES

● ROTARY VALVE

When the dust density of dirty air getting into the collector is high, rotary valve empties the dust continuously from the unit. It is made by cast block with an outer ball bearing, engine and reductor.



● COMP. AIR REGULATOR

It regulates the pressure of the compressed air from compressor and ensures it has been forwarded to air tank as dry, thus the filter cleaning pressure is kept under control and safety of filters is guaranteed.



● SILENCER

Produced cylindrically to absorb the air noise of ventilator outlet.



● DİĞER OPSİYONERLER

- Ladder and elevation step
- FanController Panel with Frequency Converter
- Filter Inlet and Outlet Manifolds

EX-PROOF ACCESSORIES

Patlama riski bulunan tozlarda kullanılması önerilen aksesuarlardır.

● EXPLOSION VENT

ATEX certificated explosion door is used, which is produced by stainless steel.



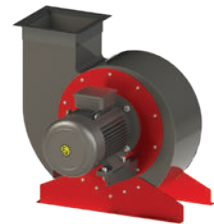
● PILOT BOX & EX-PROOF COILS

The box protects pulse valve coils from extreme outside conditions.

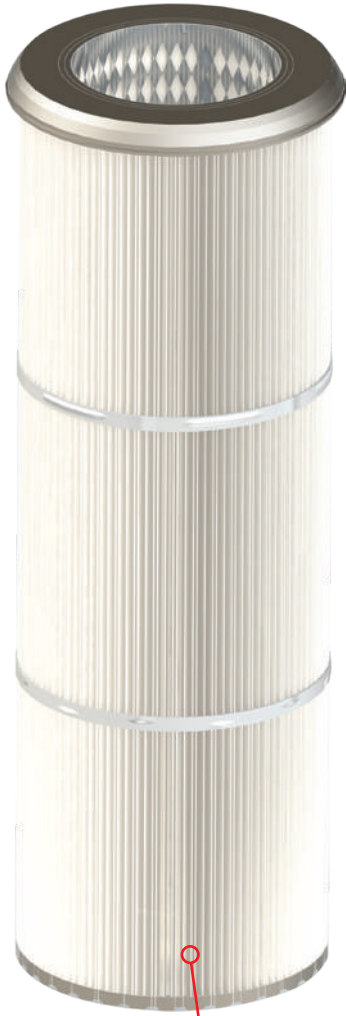


● EX-PROOF FAN and MOTOR

ATEX certificated ex-proof motor and fan are used, which are suitable for different capacity requirements.



CARTRIDGE FILTER



According to DIN EN 60335-2-69 standards, it has a filtration efficiency up to 99,9%.



It provides higher filtration area with the same volume.



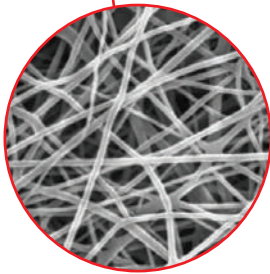
It provides extended use without losing filtration efficiency.

In Bomaksan branded PKF Jet-pulse Dust Collector Units, highly productive 100% non-woven polyester cartridge filters are used. With its' superior pleating technique it's guaranteed the pleating sizes have been equal and better filter cleaning is ensured.

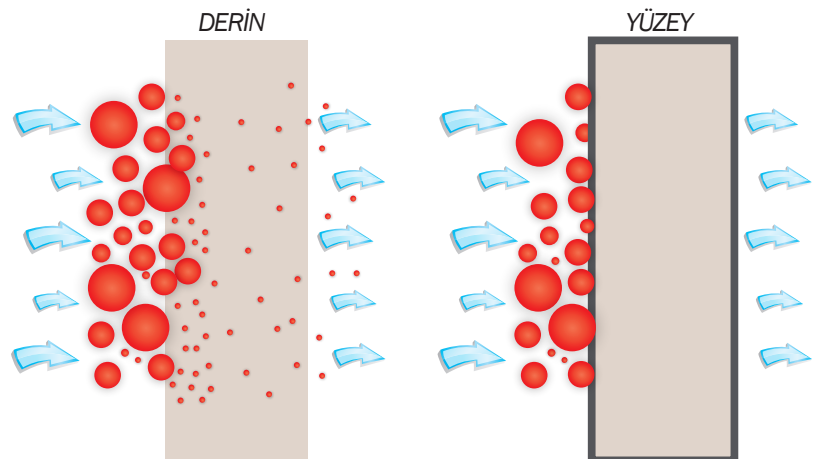
Bomaksan engineers offer the most suitable filter material for all execution and dust types. Some filter materials considering factors such as density of dust, humidity proportion, if the dust has a potential to be loaded statically and so on are as follows;

- PolyMight - 100% non-woven polyester
- PolyMight HO - 100% non-woven polyester + Oleo and Hydrophobic
- PolyMight ALU - 100% non-woven aluminised polyester + Antistatic
- PolyMight 255 PTFE - 100% non-woven polyester + ePTFE Membrane (E11)
- PolyMight 265 PTFE - 100% non-woven polyester + ePTFE Membrane (H13)
- PolyMight ALU PTFE - 100% non-woven aluminised polyester + ePTFE
- NanoBlend FR - 80% Cellulose 20% Polyester Blend + Nanofiber Coating

SURFACE FILTRATION



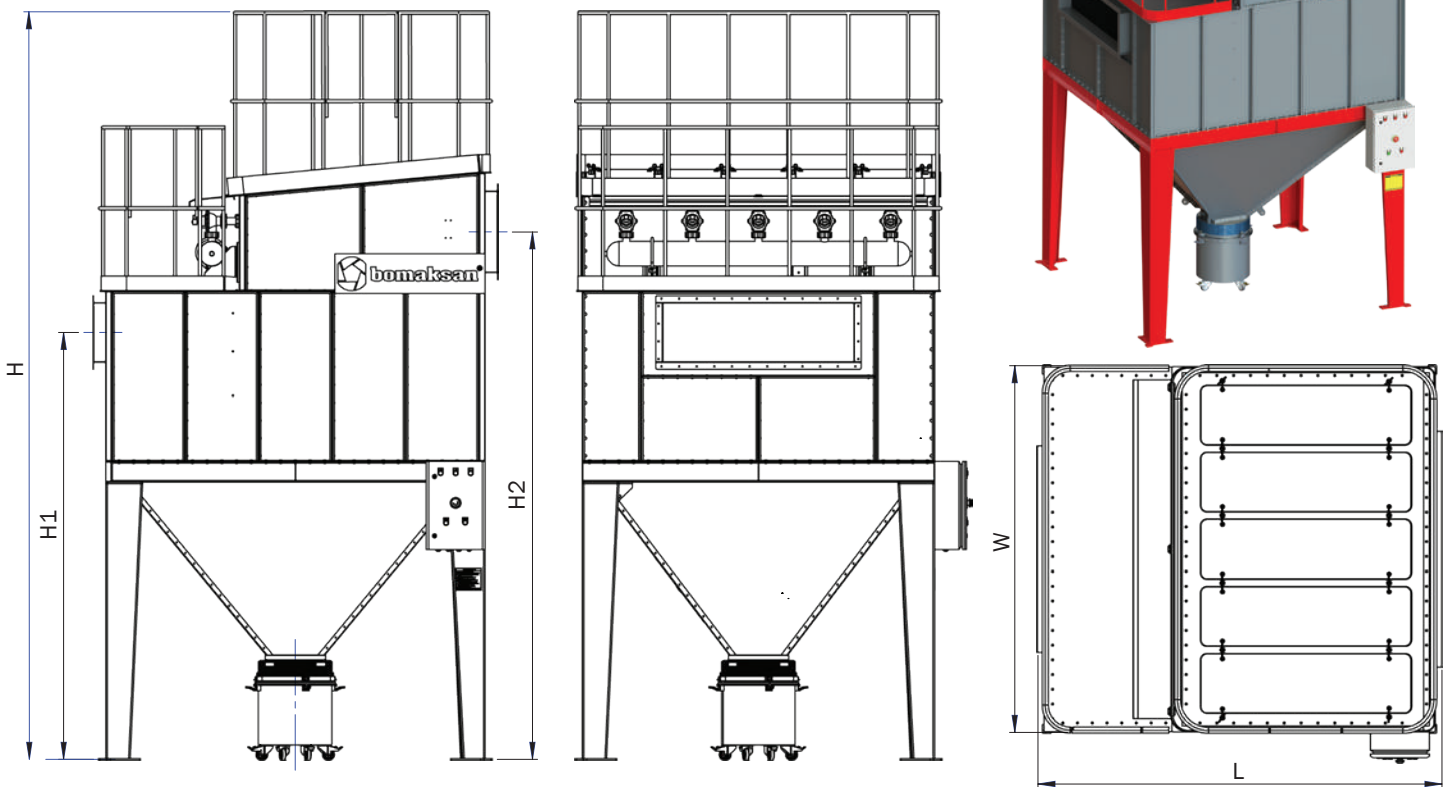
On the contrary to traditional filters, filters made by non-woven polyester performs the filtration not in the filter but on the surface. Therefore;



- The penetration of dust inside the filter is prevented and filter life is extended
- Less differential pressure is produced and required compressed air consumption for cleaning process is decreased
- Higher filtration efficiency is provided

TECHNICAL DETAILS

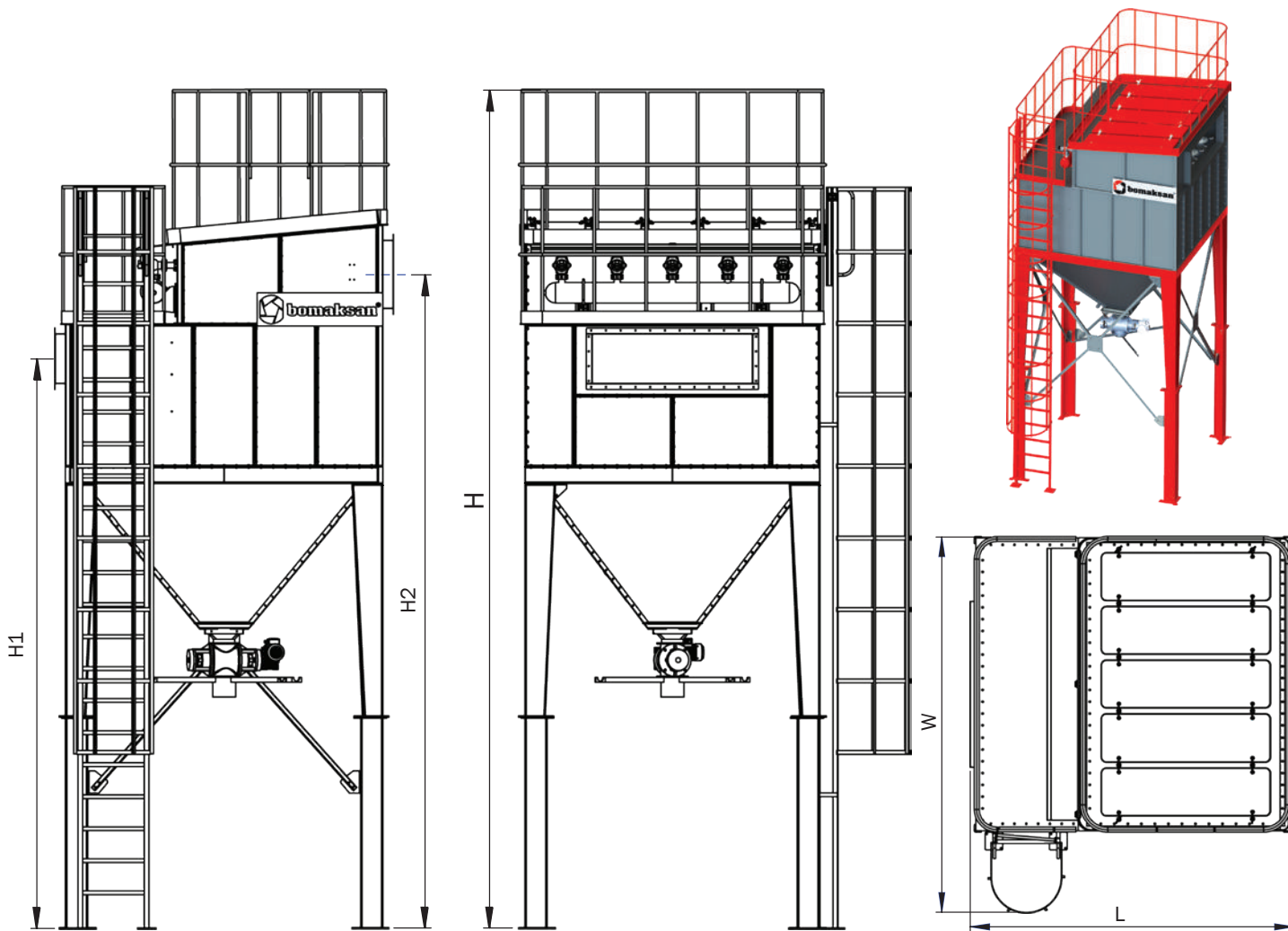
Bomaksan branded PKF Jet-Pulse Dust Collector is designed studiously by Bomaksan engineers. Data taking place in the tables is prepared for you to choose the PKF model best suited for your needs. Please contact with your Bomaksan Sales Representative to have further informations about our products.



TECHNICAL SPECIFICATIONS

MODEL	PKF-4	PKF-6	PKF-9	PKF12	PKF-15	PKF-18
Cartridge Filter (unit)	4	6	9	12	15	18
Total Filtration Area (m2)	80	120	180	240	300	360
Filter Material	NanoBlend FR	NanoBlend FR	NanoBlend FR	NanoBlend FR	NanoBlend FR	NanoBlend FR
Fan Capacity (m3/h)	2.000 - 5.000	3.000 - 7.500	4.500 - 11.000	6.000 - 15.000	7.500 - 19.000	9.000 - 22.500
Filtration Velocity (m3/m2/h)	0,42 - 1,05	0,42 - 1,05	0,42 - 1,02	0,42 - 1,05	0,42 - 1,05	0,42 - 1,04
Pulse - Valve (type - unit)	1 1/2" - 2	1 1/2" - 3	1 1/2" - 5	1 1/2" - 6	1 1/2" - 8	1 1/2" - 9
Compressed Air Req.(bar)	4 - 6	4 - 6	4 - 6	4 - 6	4 - 6	4 - 6
Power Supply (V ve Hz)	350V - 50Hz	350V - 50Hz	350V - 50Hz	350V - 50Hz	350V - 50Hz	350V - 50Hz
Operating Temperature (oC)	0/80 Dry Air	0/80 Dry Air	0/80 Dry Air	0/80 Dry Air	0/80 Dry Air	0/80 Dry Air
Cabin Comp. Strength (Pa)	Max. 5000	Max. 5000	Max. 5000	Max. 5000	Max. 5000	Max. 5000
DIMENSIONS	PKF-4	PKF-6	PKF-9	PKF12	PKF-15	PKF-18
Width (W) (mm)	1.280	1.600	2.100	2.100	2.500	3.120
Length (L) (mm)	1.900	2.240	2.495	2.980	2.985	3.025
Height (H) (mm)	2.850	3.060	3.540	3.565	3.935	4.030
1st Modula Height (H1) (mm)	1.920	2.780	2.470	2.440	2.745	2.765
2nd Modula Height(H2) (mm)	2.570	2.990	3.140	3.130	3.505	3.625

TECHNICAL DETAILS



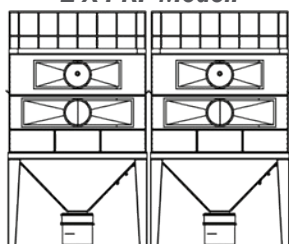
DIMENSIONS

MODEL	PKF-4	PKF-6	PKF-9	PKF-12	PKF-15	PKF18
Width (W) (mm)	1.980	2.300	2.800	2.800	3.300	3.820
Length (L) (mm)	1.900	2.240	2.355	2.750	2.750	2.750
Height (H) (mm)	5.270	5.700	6.250	6.325	6.570	6.585
1st Modula Height (H1) (mm)	3.360	3.640	4.090	4.080	4.285	4.230
2nd Modula Height(H2) (mm)	4.020	4.440	4.760	4.785	5.060	5.085

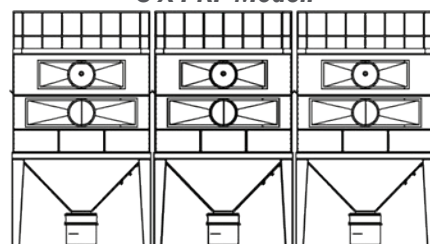
*Bomaksan reserves the right to change or modify the details in the list at any time.

MODULAR SYSTEM INSTALLATION

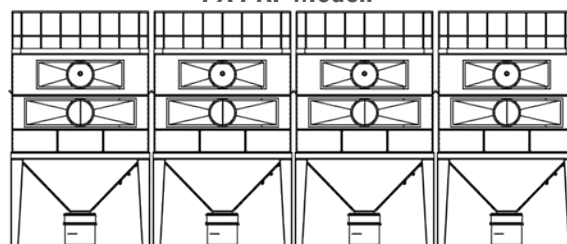
2 X PKF Modeli



3 X PKF Modeli



4 X PKF Modeli





bomaksan[®]
INDUSTRIAL AIR FILTRATION SYSTEMS

Authorised Re-Seller

